

Entrypass Platform1 ACS

(Standard / Professional / Enterprise)

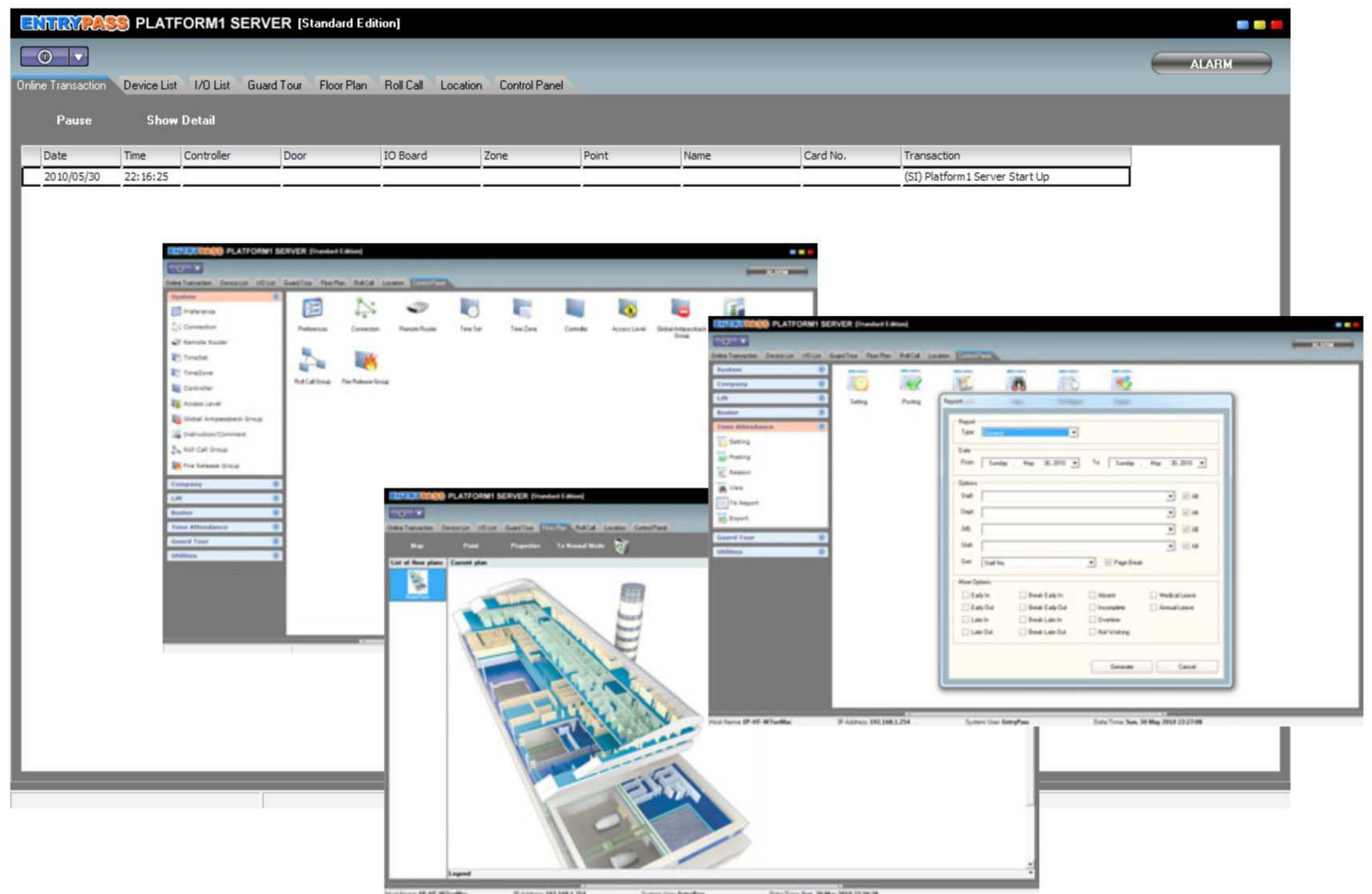
OVERVIEW

Entrypass Platform1 Access Control System was developed with scalable capabilities in mind, it is a powerful client server based Windows application that provides fully integrated features required in the most demanding physical access control industry.

The system uses client server architecture based on industry standard operation system, networks and protocols to form a total integrated system that can support a small implementation which consist of a couple of doors to large scale, multi-location which consists of thousand of doors in a distributed manner.

ACTIVE PUSH

No more waiting! Abandoned the conventional card sending process which take forever, DataMirror reproduce the exact card data structure before sending to the control panel. This dramatically reduced the time required for sending large quantity of card to control panel.



ENTRYPASS PLATFORM1 ACCESS CONTROL SYSTEM

Access Control

Biometrics Integration

xSocket Integration

Time & Attendance

Alarm Management

XML Trans. Server

Interactive Floor Plan

Online Guard Tour

CCTV Integration

Active Engine

Lift / Elevator

VMS Integration

Ordering Information

EP.P1.Std

Entrypass Platform1 Access Control System – Standard Version

EP.P1.Pro

Entrypass Platform1 Access Control System – Professional Version

EP.P1.Ent

Entrypass Platform1 Access Control System – Enterprise Version

INTERACTIVE FLOOR PLAN

EP.P1 enable system monitoring to another level, individual control panel, door and alarm point can be setup as interactive icon onto the graphical map to represent the current hardware status to the user.

User may perform real time control and management over the interactive icon with a few mouse clicks.

SYSTEM NOTIFICATION

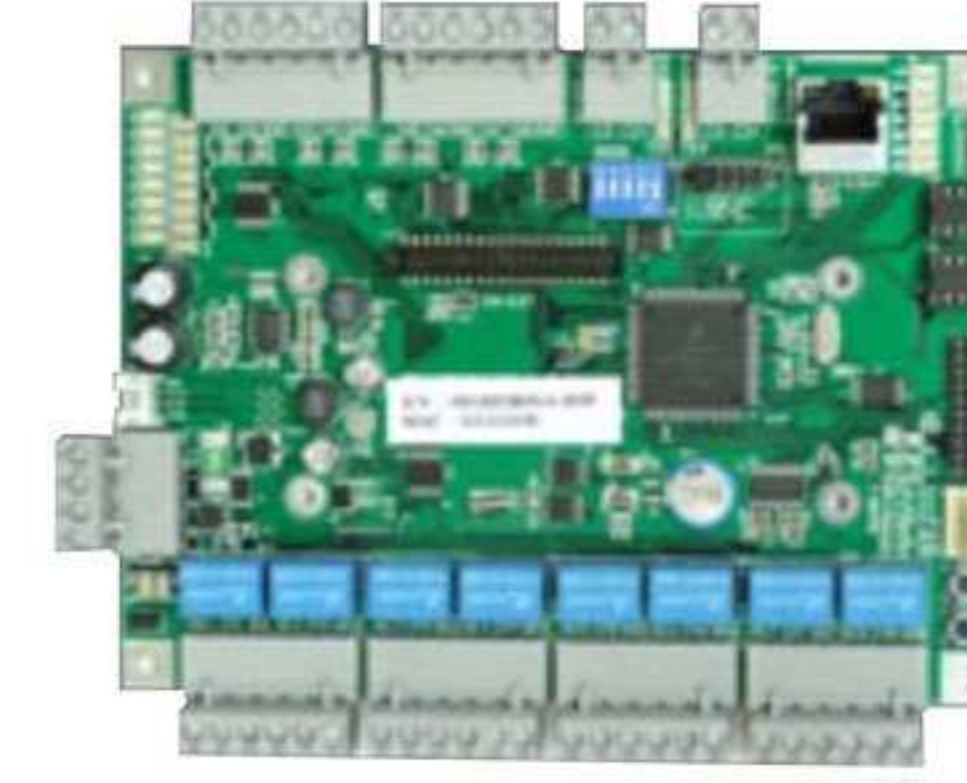
Other than the real time status on the server application, Entrypass Platform1 ACS may also be configured to send notification over email and SMS (optional GSM module required) to report any alarm occurred in the system.



EP.MiNi



EP.N-MiNi



EP.HIO



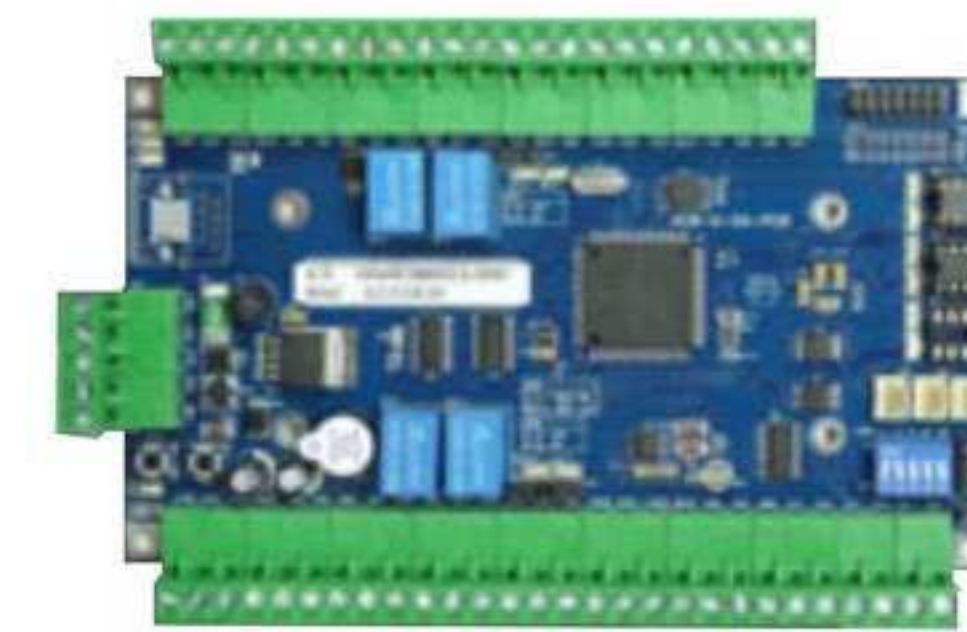
Suprema
Biometrics Readers



EP.S3100



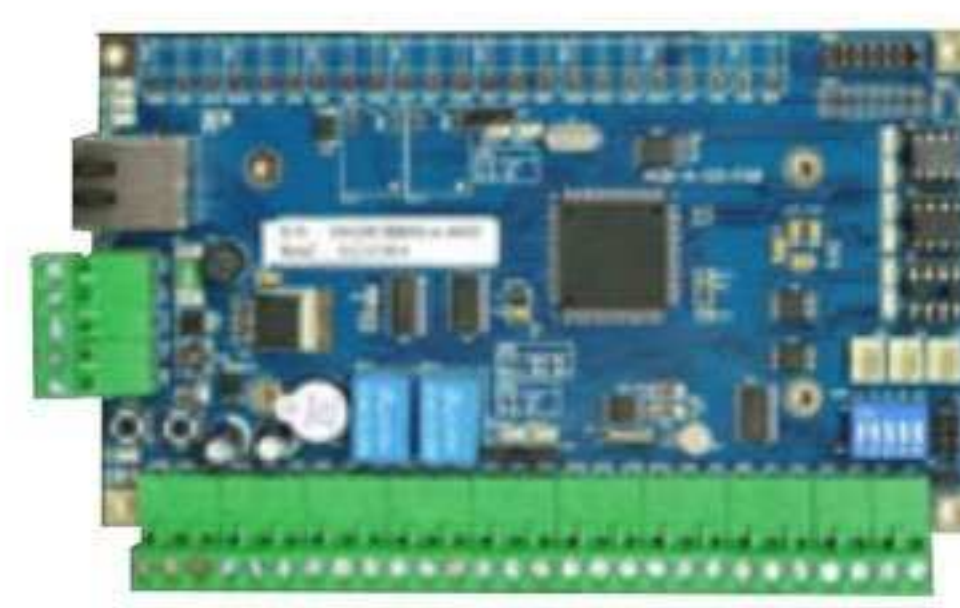
EP.S3200



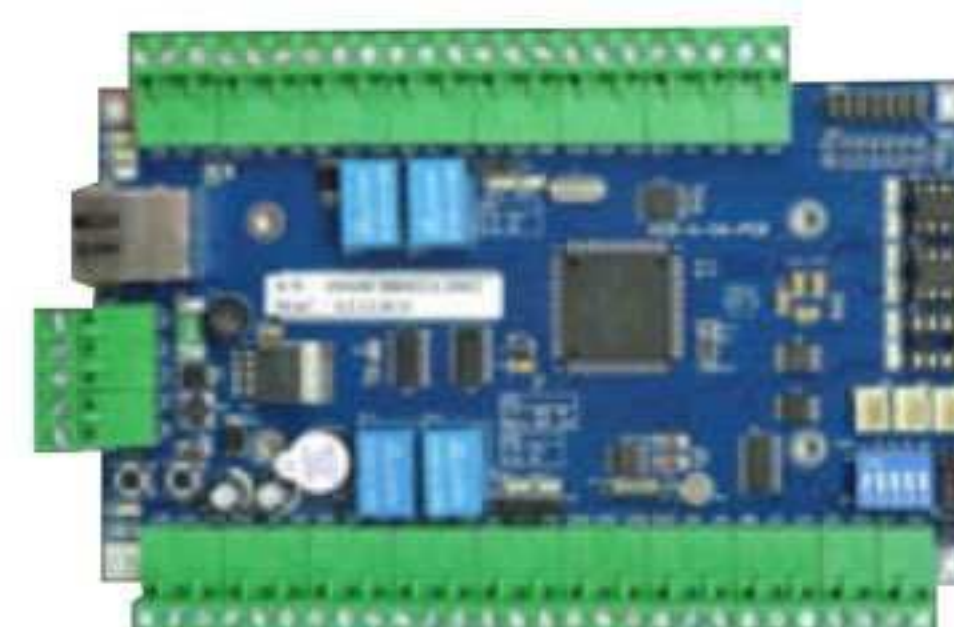
EP.S3400



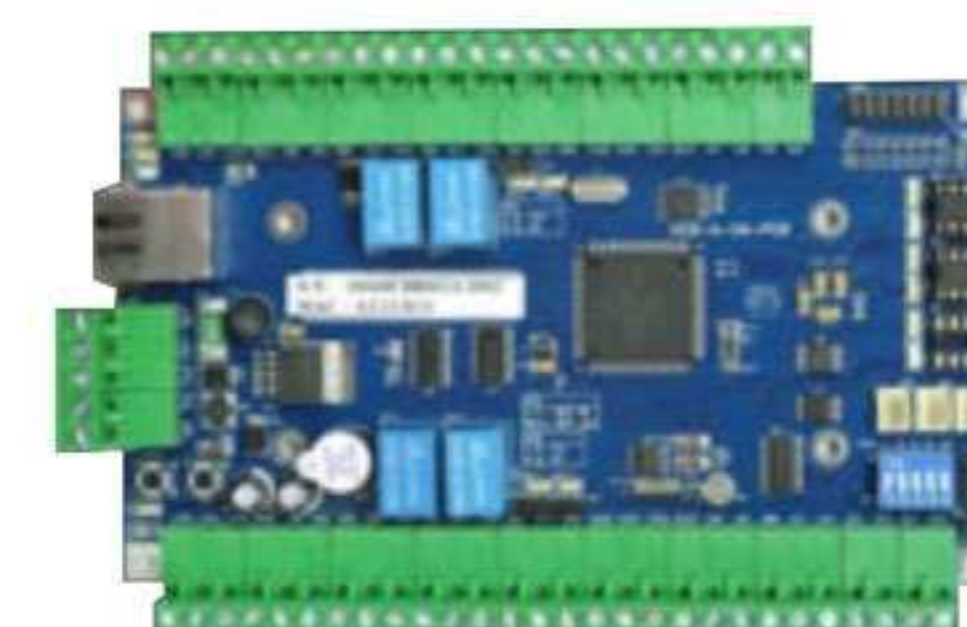
Suprema
BioStar Mifare
Writer



EP.N5100



EP.N5200



EP.N5400

Technical Specification

Operating System	<ul style="list-style-type: none"> • Windows XP Professional • Windows Server 2000 Series • Windows Server 2003 Series • Windows Server 2008 Series • Windows 7 Series
Processor	<ul style="list-style-type: none"> • Intel Pentium IV 2GHz (Minimum) • Intel Pentium IV 3GHz and above (Recommended)
RAM	<ul style="list-style-type: none"> • 1GB (Minimum) • 2GB (Recommended)
Minimum Free Hard Disk Space	4GB
Screen Resolution	<ul style="list-style-type: none"> • 1024 x 768 (Minimum) • 1920 x 1080 (Recommended)
Graphic Adapter	<ul style="list-style-type: none"> • 32MB (Minimum) • 512MB and above (Recommended)
Optical Drive	48X CD / DVD-Rom
Sound Card	Required for playing alert & alarm notification
Printer	Compatible printer

DCAM TECHNOLOGY (M) SDN BHD

No.18-2, Jalan DU2, Taman Damai Utama,
47180 Puchong, Selangor Darul Ehsan, Malaysia.
Tel : +603-8074 8633 Email: danny@dcam.com.my
Fax : +603-8082 1597 Website : www.dcam.com.my

Product specification and availability subject to change without notice. Certain product names mentioned herein may be trade names and/or registered trademarks of other companies.